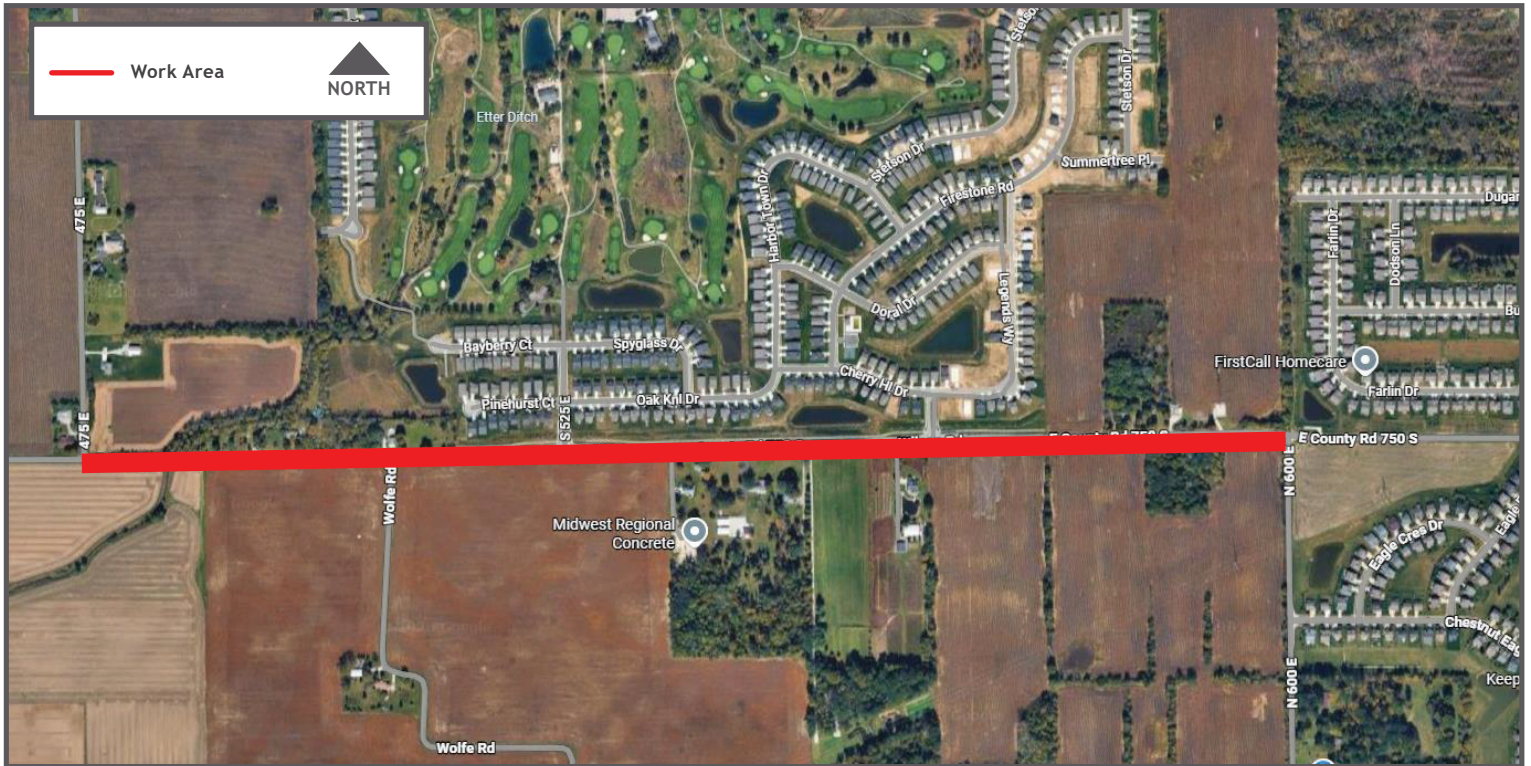


CONSTRUCTION NOTICE



CITIZENS - LEBANON WATER SUPPLY PROGRAM - EAST 750 SOUTH

Citizens Energy Group is preparing to extend new water mains in your area. This construction will begin on or after May 18 and will take approximately two to three months to complete. Preliminary surveying and erosion control work may take place as early as May 11. During construction, expect temporary lane restrictions along East 750 South from its intersection with North 600 East to its intersection with 475 East, as depicted on the attached graphic. Access to nearby homes and businesses will be maintained. Motorists should follow all posted signage to avoid delays. Additional information about the project can be found at www.citizensenergygroup.com/CLWSP or by scanning the QR code below. We know construction is inconvenient, but we appreciate your patience as we work to minimize the impact on the community.

Scan for
additional information



For more information visit:
CitizensEnergyGroup.com/Construction